

McPC

PC Card Media Converters



The ease of installation and availability of various Ethernet speeds make the *McPC Series* of PC card-level media converters the perfect solution for enterprises with changing requirements such as adding new employees and changing workstation locations.

Ideal for Fiber-to-the-Desktop applications, McPC installs directly inside a PC.

The *McPC Series* is uniquely designed to install directly inside a workstation or file server. With *McPC*, there's no need to replace existing NICs and no additional configuration.

Plug and Play Operation

- ◆ Easily installs inside PC; no configuration required

Meets a multitude of installation requirements

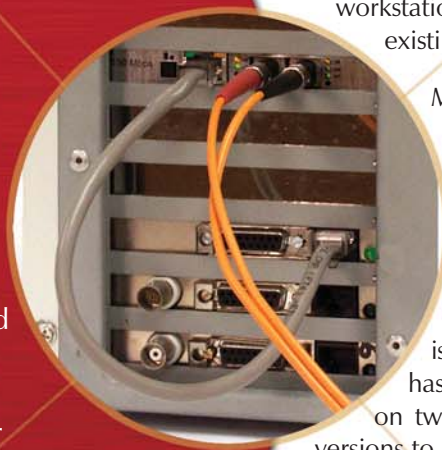
- ◆ Available in 10 Mbps, 100 Mbps, 1000 Mbps, and both autosensing and switching 10/100 versions
- ◆ Available for multi-mode or single-mode fiber with ST, SC or Small Form Factor fiber connectors

Converts 10/100 Mbps twisted pair to fiber

- ◆ Provides transparent end-to-end 10/100 auto-negotiation for easy upgrade
- ◆ No user intervention or visits to remote locations required

Eases troubleshooting

- ◆ *LinkLoss*, *FiberAlert* and *Link Fault Detection* features assist in diagnosing problems on fiber optic networks



McPC snaps into any slot on a standard PCI or ISA PC. *McPC* does not plug into the bus nor is IRQ utilization required. *McPC* draws power directly from the workstation, and the supplied Cat 5 cable connects to the existing twisted pair NIC.

McPC includes troubleshooting features* such as *LinkLoss*, *FiberAlert* and *Link Fault Detection* that make isolating fiber breaks easier should they occur. *McPC* also has *AutoCross* or switch-selectable crossover/pass-through on twisted pair connections, *Auto-Negotiation* on 100 Mbps versions to ensure compatibility with other network devices, switch-selectable termination on BNC ports, and LEDs that assist in network diagnostics and troubleshooting. The *McPC Series* includes:

- 1000 Mbps copper-to-fiber
- 10/100 Mbps copper-to-fiber
- 100 Mbps copper-to-fiber
- 10 Mbps copper-to-fiber
- 10 Mbps copper-to-coax

Autosensing and Switching 10/100 McPC Converters Due to rapidly changing requirements in cabling bandwidth, distance and security, network managers often attempt to "future-proof" their networks by deploying 10/100 Mbps switches. Using either the auto-sensing, dual-speed *McPC 10/100* or the auto-negotiating, switching 10/100 *McPC TP-TX/FX* is a perfect complement to the switches because network managers can upgrade from 10 Mbps Ethernet to 100 Mbps Fast Ethernet without replacing hardware. Users can upgrade to Fast Ethernet when ready and our 10/100 *McPC* products will automatically sense the increased bandwidth and adapt accordingly with no user intervention. **McPC 10/100** provides a single conversion between 10 Mbps twisted pair and 10 Mbps fiber, or 100 Mbps twisted pair and 100 Mbps fiber. The plug-n-play **McPC TP-TX/FX** provides a single conversion between 10 Mbps or 100 Mbps twisted pair and 100 Mbps multi-mode or single-mode fiber.

Gigabit Ethernet McPC Converters provide a single conversion between 1000 Mbps Gigabit Ethernet twisted pair and fiber. **Fast Ethernet McPC Converters** provide a single conversion between 100 Mbps Fast Ethernet twisted pair and fiber. **Ethernet McPC Converters** provide a single conversion between 10 Mbps Ethernet twisted pair and either thin coax or fiber.

**McPC TP-TX/FX* and *McPC TP/BNC* do not include any troubleshooting features.



Making Your NetWork Better

Technical Specifications

McPC is IEEE 802.3 10Base-FL, 10Base-T, 10Base-2, 100Base-TX, 100Base-FX and 100Base-SX compliant. McPC Gigabit is 802.3ab 1000Base-T and IEEE 802.3z 1000Base-LX and 1000Base-SX compliant. Some McPC converters include troubleshooting features such as *LinkLoss*, *FiberAlert* and *Link Fault Detection*. Multi-mode and single-mode fiber versions are available for all McPCs with fiber ports. A variety of fiber connectors, including ST, SC and MT-RJ, are also available. McPC includes a standard 4-pin peripheral power connector and a 1 foot twisted pair cable with RJ-45 connectors.

Fiber Optics Specifications

The approximate average fiber distance for each McPC is listed below in the Ordering Information section after the product name. The distance in **km** or **m** is designated by the number in the [XX]. Distances are based on factory testing; actual installation distances may vary. For complete power budget information and further information on calculating specific distances, please go to www.imcnetworks.com/adocs/fcs.asp or contact IMC Networks Fiber Consulting Services at 949-465-3000.

Ordering Information

10 Mbps McPC

55-12226	McPC, TP/FO-MM850-ST [4km]
55-12236	McPC, TP/FO-MM850-SC [4km]
55-12276	McPC, TP/FO-MM1300-ST [10km]
55-12286	McPC, TP/FO-MM1300-SC [10km]
55-12246	McPC, TP/FO-SM1310-ST [20km]
55-12296	McPC, TP/FO-SM1310-SC [20km]
55-12256	McPC, TP/FO-SM1310/PLUS-ST [40km]
55-12266	McPC, TP/FO-SM1310/PLUS-SC [40km]
51-12123	McPC, TP/BNC

100 Mbps McPC

55-12137	McPC, TX/FX-MM1300-ST [2km]
55-12138	McPC, TX/FX-MM1300-SC [2km]
55-12137-MT	McPC, TX/FX-MM1300-MT [2km]
55-12139	McPC, TX/SX-MM850-ST [300m]
55-12140	McPC, TX/SX-MM850-SC [300m]
55-12341	McPC, TX/FX-SM1310/PLUS-ST [40km]
55-12342	McPC, TX/FX-SM1310/PLUS-SC [40km]
55-12343	McPC, TX/FX-SM1310/LONG-ST [80km]
55-12344	McPC, TX/FX-SM1310/LONG-SC [80km]
55-12345	McPC, TX/FX-SM1550/LONG-SC [80km]

Switching 10/100 Mbps McPC TP-TX/FX

55-12732	McPC, TP-TX/FX-MM1300-ST [2km]
55-12733	McPC, TP-TX/FX-MM1300-SC [2km]
55-12735	McPC, TP-TX/FX-SM1300/PLUS-SC [40km]

10/100 Mbps McPC

55-12260	McPC, 10/100-MM850-ST [300m]
55-12261	McPC, 10/100-MM850-SC [300m]
55-12262	McPC, 10/100-MM1300-ST [2km]
55-12263	McPC, 10/100-MM1300-SC [2km]
55-12262-MT	McPC, 10/100-MM1300-MT [2km]
55-12267	McPC, 10/100-SM1310/PLUS-ST [40km]
55-12268	McPC, 10/100-SM1310/PLUS-SC [40km]
55-12269	McPC, 10/100-SM1310/LONG-ST [80km]
55-12270	McPC, 10/100-SM1310/LONG-SC [80km]
55-12274	McPC, 10/100-SM1550/LONG-SC [80km]

1000 Mbps Gigabit McPC

55-12910	McPC-Gigabit, TX/SX-MM850-SC [300m]
55-12910-MT	McPC-Gigabit, TX/SX-MM850-MT [300km]
55-12911	McPC-Gigabit, TX/LX-SM1310/PLUS-SC [40km]
55-12914	McPC-Gigabit, TX/LX-SM1550/LONG-SC [70km]



IMC Networks (Headquarters)

19772 Pauling
Foothill Ranch, CA 92610
TEL: 949-465-3000
FAX: 949-465-3020
sales@imcnetworks.com
www.imcnetworks.com

IMC Networks (Europe)

Herseltsesteenweg 268
B-3200 Aarschot Belgium
TEL: +32-16-550880
FAX: +32-16-550888
eurosales@imcnetworks.com

IMC Networks

(Eastern US/Latin America)

18840 US Hwy. 19 North Suite 400
Clearwater, FL 33764
TEL: 727-524-8152
FAX: 727-524-8432

Copyright © 1998-2003 IMC Networks. All rights reserved. The information in this document is subject to change without notice. IMC Networks assumes no responsibility for any errors that may appear in this document. Specific product names may be trademarks or registered trademarks and are the property of their respective companies.



IMC Networks

Fiber Consulting Services

For information call:
1-800-624-1070 (in US)
+32-16-550880 (in Europe)
Or e-mail: fcs@imcnetworks.com



Document #55-90127
March 2004